



Duct System Summary

Entire House

Fresh Air Corporation

Job: 456
 Date: October 1, 2006
 By: John Contractor

Project Information

For: Mr. and Ms. Smith
 1 Easy Lane, Perfect, ST 12345
 Phone: 555-555-5555 Fax: 555-555-5556
 Email: smiths@email.com

	Heating	Cooling
External static pressure	0.50 in H2O	0.50 in H2O
Pressure losses	0.12 in H2O	0.12 in H2O
Available static pressure	0.38 in H2O	0.38 in H2O
Supply / return available pressure	0.25 / 0.13 in H2O	0.25 / 0.13 in H2O
Lowest friction rate	0.098 in/100ft	0.098 in/100ft
Actual air flow	505 cfm	505 cfm
Total effective length (TEL)		386 ft

Supply Branch Detail Table

Name	Design (Btuh)	Htg (cfm)	Clg (cfm)	Design FR	Diam (in)	Rect Size (in)	Duct Matl	Actual Ln (ft)	Ftg.Eqv Ln (ft)	Trunk
Living room	c 2263	52	95	0.205	5	0x0	ShMt	8.0	115.0	st2
Dining	h 261	46	37	0.143	4	0x0	ShMt	16.0	160.0	st1
Kitchen	c 2086	60	88	0.150	5	0x0	ShMt	28.0	140.0	st1
Bedroom 1	h 376	66	55	0.225	4	0x0	ShMt	7.0	105.0	
Hall	h 121	21	18	0.154	4	0x0	ShMt	14.0	150.0	st1
Master	h 310	54	36	0.109	5	0x0	ShMt	7.0	225.0	st5
Laundry	h 163	29	15	0.105	4	0x0	ShMt	31.0	210.0	st4A
Bedroom 2	h 251	44	27	0.101	4	0x0	ShMt	25.0	225.0	st4
Master Bath	h 142	25	13	0.113	4	0x0	ShMt	13.0	210.0	st5A
Office	h 106	19	14	0.099	4	0x0	ShMt	9.0	245.0	st4
Room28	h 212	37	29	0.098	4	0x0	ShMt	21.0	235.0	st4
Mudroom	c 1867	52	78	0.151	5	0x0	ShMt	27.0	140.0	st1

Supply Trunk Detail Table

Name	Trunk Type	Htg (cfm)	Clg (cfm)	Design FR	Veloc (fpm)	Diam (in)	Rect Duct Size (in)	Duct Material	Trunk
st1	Peak AVF	180	221	0.143	828	7	0 x 0	ShtMetl	
st2	Peak AVF	52	95	0.205	697	5	0 x 0	ShtMetl	
st3	Peak AVF	208	134	0.098	595	8	0 x 0	ShtMetl	
st4A	Peak AVF	29	15	0.105	327	4	0 x 0	ShtMetl	st4
st4	Peak AVF	128	85	0.098	654	6	0 x 0	ShtMetl	st3
st5	Peak AVF	79	49	0.109	582	5	0 x 0	ShtMetl	st3
st5A	Peak AVF	25	13	0.113	286	4	0 x 0	ShtMetl	st5

Bold/italic values have been manually overridden

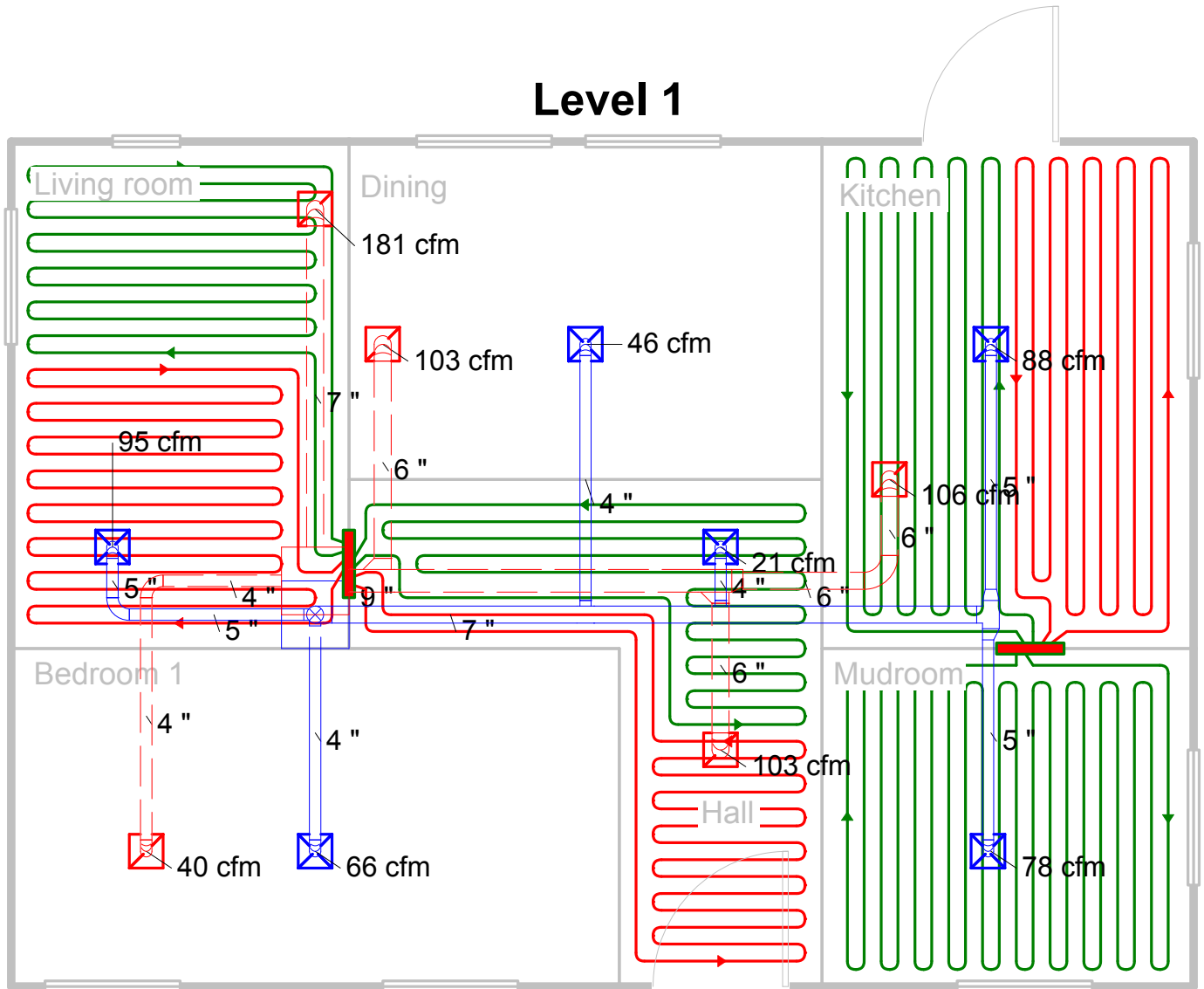
Return Branch Detail Table

Name	Grill Size (in)	Htg (cfm)	Clg (cfm)	TEL (ft)	Design FR	Veloc (fpm)	Diam (in)	RectSize (in)	Stud/Joist Opening (in)	Duct Matl	Trunk
rb5	0x0	177	181	71.0	0.180	678	7	0x 0		ShMt	
rb1	0x0	96	106	130.0	0.098	538	6	0x 0		ShMt	rt1A
rb2	0x0	89	103	107.0	0.120	524	6	0x 0		ShMt	rt1
rb3	0x0	40	31	83.0	0.154	455	4	0x 0		ShMt	rt2
rb4	0x0	103	84	89.0	0.144	526	6	0x 0		ShMt	rt1

Return Trunk Detail Table

Name	Trunk Type	Htg (cfm)	Clg (cfm)	Design FR	Veloc (fpm)	Diam (in)	Rect Duct Size (in)	Duct Material	Trunk
rt1A	Peak AVF	96	106	0.098	538	6	0 x 0	ShtMetl	rt1
rt1	Peak AVF	289	293	0.120	663	9	0 x 0	ShtMetl	
rt2	Peak AVF	40	31	0.154	455	4	0 x 0	ShtMetl	

Level 1

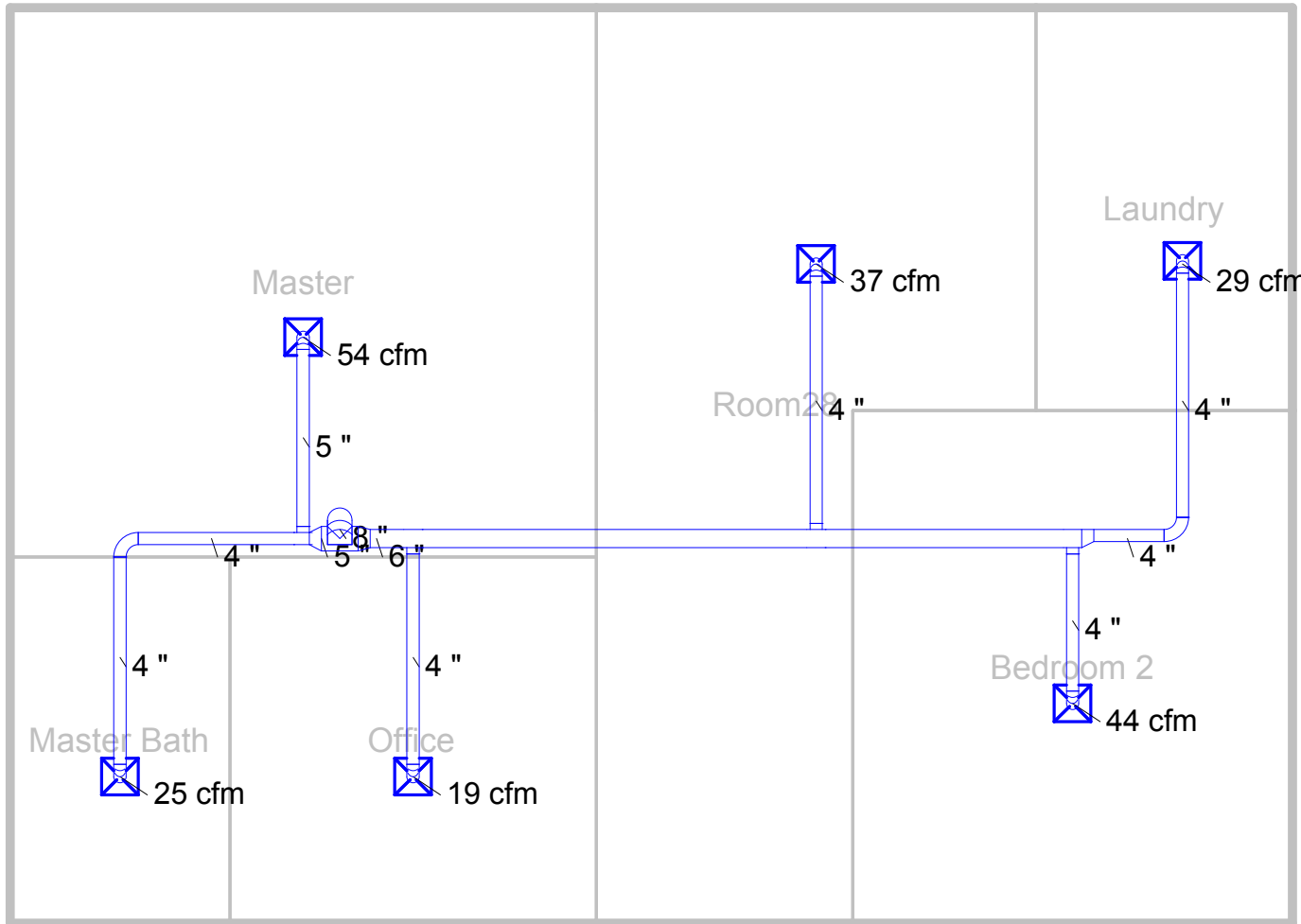


Job #: 456
Performed by John Contractor for:
 Mr. and Ms. Smith
 1 Easy Lane
 Perfect, ST 12345
 Phone: 555-555-5555 Fax: 555-555-5556
 smiths@email.com

Fresh Air Corporation
 1 Cool Lane
 Perfect, ST 12345
 Phone: 555-123-4567 Fax: 555-765-4321
 www.freshair.com freshair@freshair.com

Scale: 1 : 60
 Page 2
 Right-Suite Residential
 6.0.101 RSR44403
 2007-Mar-22 10:34:12
 C:\Documents and Settings\jpeabody\ID...

Level 2



Job #: 456
Performed by John Contractor for:
 Mr. and Ms. Smith
 1 Easy Lane
 Perfect, ST 12345
 Phone: 555-555-5555 Fax: 555-555-5556
 smiths@email.com

Fresh Air Corporation
 1 Cool Lane
 Perfect, ST 12345
 Phone: 555-123-4567 Fax: 555-765-4321
 www.freshair.com freshair@freshair.com

Scale: 1 : 60
 Page 1
 Right-Suite Residential
 6.0.101 RSR44403
 2007-Mar-22 10:34:12
 C:\Documents and Settings\jpeabody\ID...